



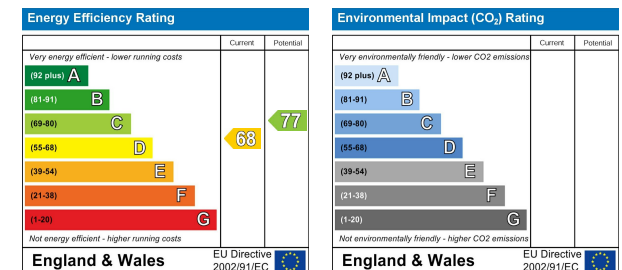
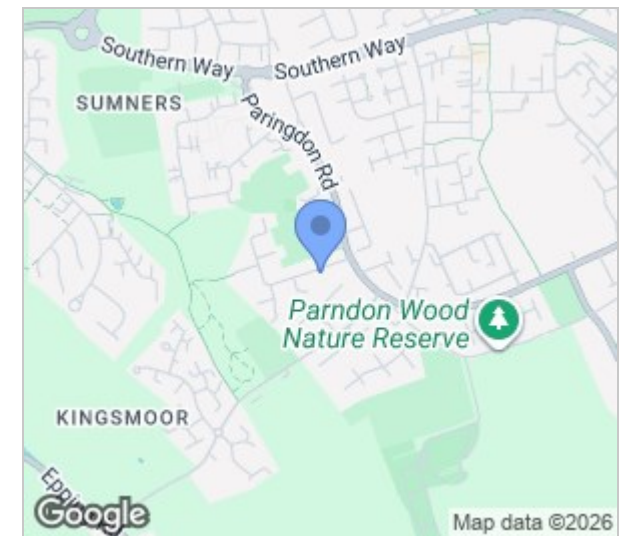
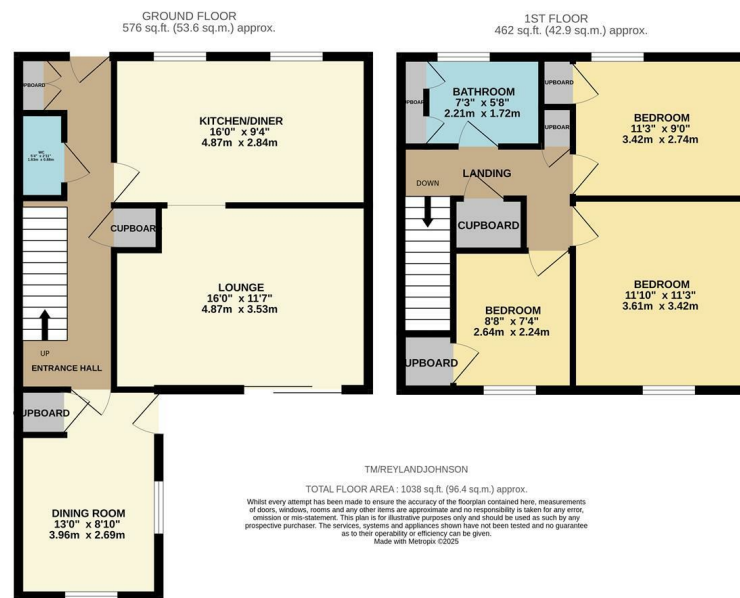
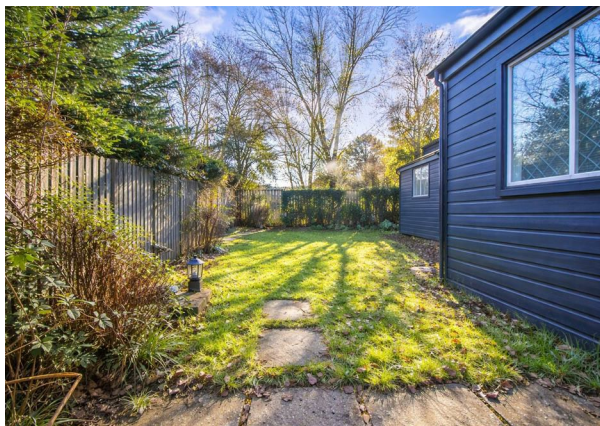
**The Maples, Harlow, CM19 4RD**  
**£375,000**





# The Maples, Harlow, CM19 4RD

Offered with no onward chain is this three bedroom, staggered terrace family home, which has been recently redecorated throughout, includes a garage and parking, and is located in the popular private turning of The Maples, Harlow. On the ground floor there is an entrance hallway leading to a well presented kitchen/diner with a range of wall and base units, a large lounge, separate dining room/play room and a cloakroom/WC, whilst upstairs there are three bedrooms and a family bathroom with a white three piece suite. Outside, the south facing rear garden is mainly laid to lawn, with a patio area, rear access and shed, with a small green to the front and the garage and parking en-bloc. The Maples is located just off Paringdon Road, with local schools, shops and open fields and woodland just a short walk away.



These particulars, whilst believed to be accurate are set out as a general outline only for guidance and do not constitute any part of an offer or contract. Intending purchasers should not rely on them as statements of representation of fact, but must satisfy themselves by inspection or otherwise as to their accuracy. No person in this firm's employment has the authority to make or give any representation or warranty in respect of the property.